



The SourcePoint Summit

The PASSHE Ariba Implementation Monthly Newsletter

Vol. 1, No. 1 Published September 15, 2020

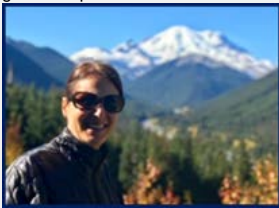
A New Adventure!

Greetings from Project SourcePoint! We are so excited to have you on this journey with us towards a more efficient, collaborative Procurement experience.

While I am not a mountaineer, I enjoy hiking and visiting national parks with my family. I have a daughter who has just begun her higher education experience – virtually for now. My other daughter is in high school and is exploring colleges where she can play soccer in a couple of years. It's been a challenge sharing the Wi-Fi with them and my husband over the past few months, as we are working and schooling from home!

I joined PASSHE on June 1 to lead the Shared Services Procurement group to create system-wide efficiencies and savings across the 14 universities and the Office of the Chancellor. One of our big projects out of the gate is implementing SAP Ariba, which we refer to as SourcePoint. My career in procurement began at a predecessor company of Ariba called FreeMarkets, which pioneered the business-to-business auction concept. I'm excited to be back in public procurement, having been the Chief Procurement Officer for the Commonwealth of Pennsylvania from 2015-2018. Prior to coming to PASSHE, I worked at Amazon Business to bring innovation and best practices to state procurement.

I'm excited to be part of the PASSHE community as we traverse new ground in procurement!



Jenny Doherty
SourcePoint Executive Sponsor

Training & Resources

Training is a critical part of project implementation success and we are confident we have the right plan in place to ensure all PASSHE users are ready to use SourcePoint and confident about the new system come end-user roll-out in January.

For our colleagues who will be frequent users of the system, we will be providing virtual classroom training opportunities to get you up to speed on key system tasks and corresponding new business processes. Additionally, we will have guides and resources available in our SourcePoint Training Portal.

For individuals who are occasional SourcePoint users, we will have a library of easy-to-access job aids and resources to assist you when you are ready to create that first requisition or approve that first invoice.

Most of the training will happen during the period of mid-November to mid-December, to make sure you are getting the information you need "just in time." However, we will be hosting open demo sessions for key system tasks as early as October for those who would like a sneak peek.

Additionally, we will host periodic open help/Q&A sessions post Go-Live to support you during the first few weeks in the new tool.

In our next newsletter we will provide details regarding upcoming courses and links to sign-up for demo sessions.

Business Advocate Network

Have you met your local Business Advocate yet? Chances are you have, and you don't even know it! We have assembled a team of Procurement, Accounts Payable, and Requisition super users from across PASSHE to assist with the SourcePoint transition. They represent the voice of your university and are friendly faces you have likely seen around campus. These colleagues will be involved in testing, training, change readiness sessions, and will be your go-to support system post Go-Live.

For a list of Business Advocates and to find out who is representing your university, please click [here](#).

SourcePoint Survey

We want to hear from you! Please complete our [SourcePoint Survey](#) to help us better understand the requirements and perspectives of our colleagues across PASSHE. Your feedback will help us plan for training, better customize the technology to fit our needs, and provide an enhanced end-user experience.

If you have questions, comments, concerns or want to get involved, please contact the **SourcePoint Change Management Lead, Carley Kramer** at cakramer@passhe.edu.

Procurement Shared Services Update

Earlier this month you received a communication regarding our new Shared Services model for Procurement. The Executive Leadership Group (ELG), the

oversight organization for the Shared Services Center, has approved the development of a Regional Procurement Shared Service model as part of Procurement Shared Services. The goal is to create a best-in-class procurement service organization to promote collaboration across the universities, streamline operations to create efficiencies, and reduce costs.

This week we kicked-off our meetings with your local leadership and are looking forward to connecting with the wider Procurement audience via Town Hall Meetings next month.



Over the next few months, we will use this newsletter and other communications, as needed, to share information about this exciting transition. Stay tuned!

Your SourcePoint Leadership Team



Jenny Doherty, Executive Sponsor
JDoherty@passhe.edu



Jeff Mandel, Business Owner
jmandel@bloomu.edu



Mic Sadler, IT Manager
MSadler@passhe.edu

For More Information About SourcePoint



[Procurement Website](#)



[SourcePoint FAQs](#)



NEW Feedback Form available October! For now, please complete our [SourcePoint Survey](#)