

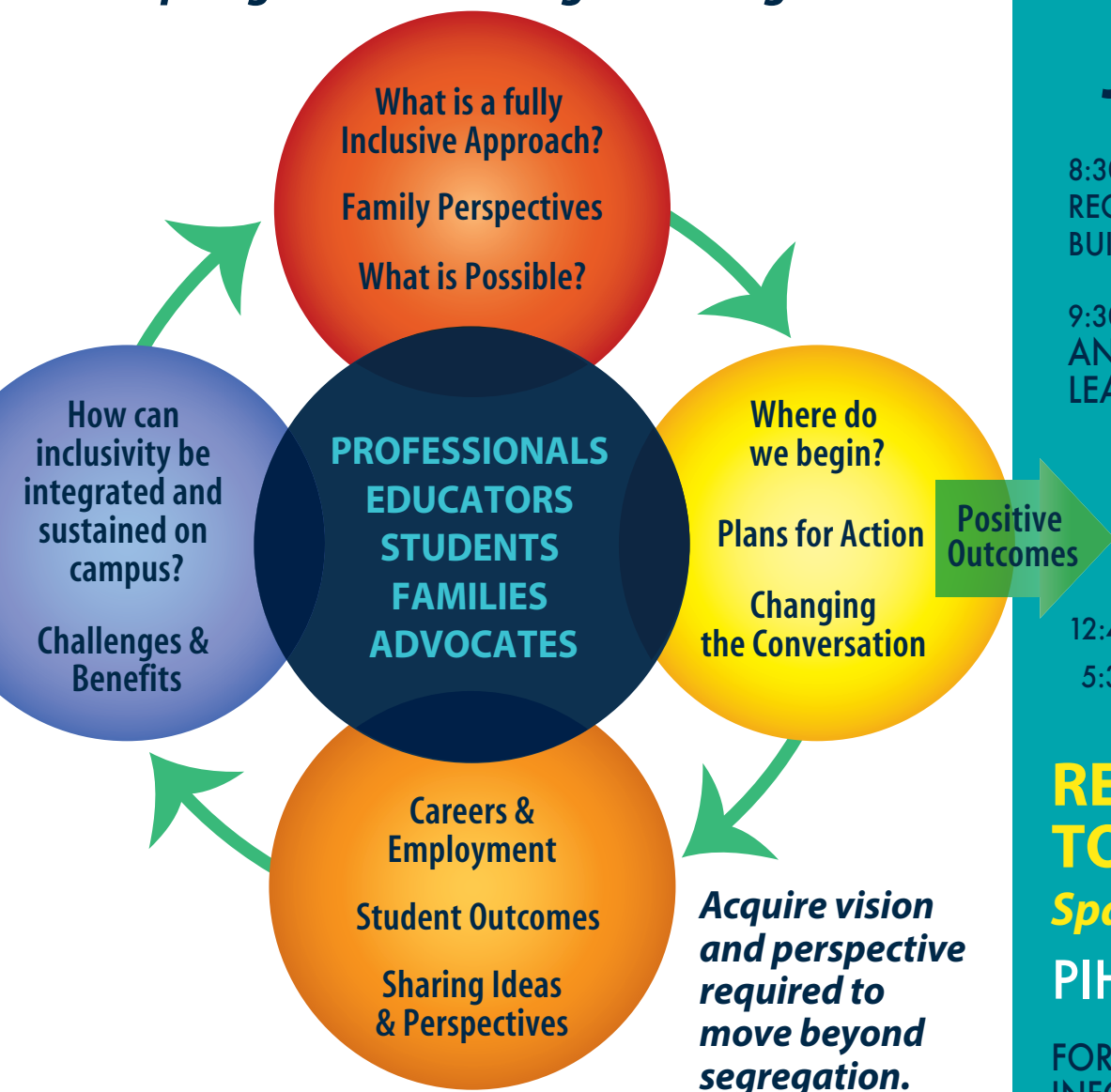
SYMPOSIUM 2018



The Journey of Inclusion

Experiencing the College Years

*View the college experience as "possible"
— a springboard to the "good things of life".*



Acquire vision and perspective required to move beyond segregation.

**MONDAY
JANUARY 8**

8:30 – 9:30
REGISTRATION/COMMUNITY BUILDING BREAKFAST

9:30 – 5:00
AN INTERACTIVE DAY OF LEARNING FACILITATED BY:

**JOHN O'BRIEN,
BRUCE UDITSKY
& CATE WEIR**

12:45 LUNCH PROVIDED
5:30 RECEPTION

REGISTER TODAY!

Space is Limited!

PIHEC.COM

FOR ANY ADDITIONAL INFORMATION PLEASE CONTACT GABRIELA HAGIU 717-871-7357

precedes the
**EVERYDAY LIVES CONFERENCE
JANUARY 9-11 · HERSHEY LODGE**

PA DHS - Office of Developmental Programs

**STUDENTS – FREE | MEMBER & FAMILY DISCOUNTS
SCHOLARSHIPS AVAILABLE – Visit PIHEC.COM**

ACCOMMODATIONS AVAILABLE AT THE HERSHEY LODGE

PIHEC is funded by the U.S. Department of Education through the acquisition of a Transition and Postsecondary Programs for Students with Intellectual Disabilities (TPSID) grant.

REGISTER TODAY! REGISTER AT PIHEC.COM



Explore “What is Possible” in an interactive learning experience designed to inform, inspire and change the conversation.

Promoting and Supporting Authentic, Inclusive Postsecondary Education

WHO SHOULD ATTEND?

PROFESSIONALS
EDUCATORS
STUDENTS
FAMILIES
ADVOCATES

*Symposium Co-Sponsors:
Keystone Institute · The Arc of PA
Integrated Studies at Millersville University
Institute on Disabilities at Temple University
PEAC · PennTASH · PADDC*

We are honored to welcome our speakers:

**John O’Brien
Bruce Uditsky
and Cate Weir**

**AWARD-WINNING AUTHORS,
INTERNATIONAL LEADERS,
& INNOVATORS**

INTENDED LEARNING OUTCOMES

- *Understand marginalization and its impact on individual outcomes and programmatic methods.*
- *Create criteria that develops and safeguards Inclusive Postsecondary education as the foundation for employment, independent living, and lifelong interdependence.*
- *Apply the use of “typical pathways” as the foundation for outcome driven individual plans.*
- *Analyze the essential role of families as a sustainable source of support.*
- *Create programmatic structures and policies which embed student voice and control into individual pathways.*
- *Understand how typical higher education pathways support meaningful employment as a safeguard against lifelong marginalization.*



The consortium is fully aligned with THINK COLLEGE accreditation standards.

CURRENT MEMBER INSTITUTIONS:

*Arcadia University
Duquesne University
East Stroudsburg University
Holy Family University
Lehigh Carbon Community College
Mercyhurst University
Millersville University
Penn State Harrisburg
Saint Vincent College
Temple University
Widener University*

Join the discussion! All perspectives are essential, welcome and invited to learn and affect change.